

# LEXUZ 100

burhéns

[www.burbens.com](http://www.burbens.com)



WEST 11021-06 SAND

## FRAME

All structural parts of the frame are made of solidwood.

## SEAT CUSHION

The core consists of 35 kg (N120) highly elastic shape cut cold foam with a siliconized fiber and feather top.

The cushion is reversible (not apply to leather).

## BACK CUSHION

CASUAL

The core consists of 23 kg (N60) highly elastic shape cut cold foam with a siliconized fiber and feather top.

The cushion is reversible (not apply to leather).

## CHILL

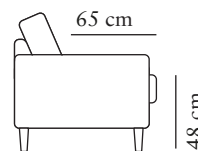
The inner cover is filled with a mix of siliconized fiber and feather.

The cushion is reversible (not apply to leather).

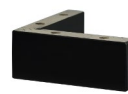
## UPHOLSTERY

The style is fixed cover and available with fabric and leather.

The cushion cover, in fabric, can be removed and washed according to washing and care instructions.



## LEGS



no 1



no 2



no 3



no 4



no 5

## COLOURS



01  
White



04  
White  
Pigmented Oak



05  
Oiled Oak



06  
Oiled Walnut



03  
Colonial



02  
Black



09  
Chrome

# LEXUZ 100

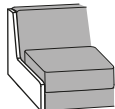
**burhéns**

[www.burbens.com](http://www.burbens.com)

Measurements may vary +/-3%, depending on the choice of upholstery and combination.

## ARMREST ENDPART

Art. Code L:  
Art. Code R:



width  
3 cm

## ARMREST 1

Art. Code L:  
Art. Code R:



width•depth•height  
22x99x63

## ARMREST 2

Art. Code L:  
Art. Code R:



width•depth•height  
25x99x58

## 1,5-MODULE

Art. Code:



width•depth•height  
100x102x92

## 2-MODULE

Art. Code:



width•depth•height  
130x102x92

## 2,5-MODULE 170

Art. Code:



width•depth•height  
170x102x92

## 2,5-MODULE 180

Art. Code:



width•depth•height  
180x102x92

## 3-MODULE (2)

Art. Code:



width•depth•height  
195x102x92

## C MODULE 90°

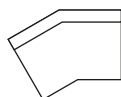
Art. Code:



width•depth•height  
113x113x92

## C MODULE 30°

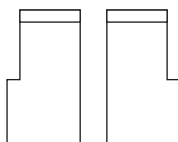
Art. Code:



width•depth•height  
139x123/102x92

## CHL MODULE X-LARGE L/R

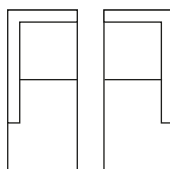
Art. Code L:  
Art. Code R:



width•depth•height  
85/114x184x92

## DIVAN MODULE L/R

Art. Code L:  
Art. Code R:



width•depth•height  
102x231x92

## END PART MODULE L/R

Art. Code L:  
Art. Code R:



width•depth•height  
102x131x92

## FOOTSTOOL 1

Art. Code:



width•depth•height  
80x60x48

## FOOTSTOOL 2

Art. Code:



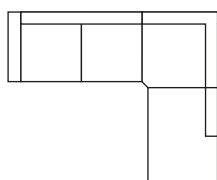
width•depth•height  
120x80x48

## ARM 2+2,5-MODULE 180

+C MODULE 90°

+END PART MODULE R

Art. Code END PART L:  
Art. Code END PART R:

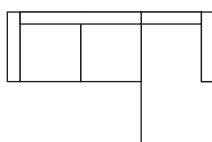


width•depth•height  
318x102/244x92

## ARM 1+2,5-MODULE 170

+CHL MODULE X-LARGE R+ARM 1

Art. Code CHL X-LARGE L:  
Art. Code CHL X-LARGE R:

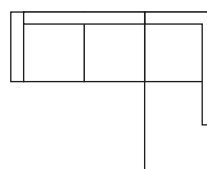


width•depth•height  
300x102/184x92

## ARM 1+2,5-MODULE 180

+DIVAN MODULE R

Art. Code DIVAN L:  
Art. Code DIVAN R:



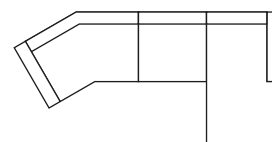
width•depth•height  
304x102/231x92

## ARM 1+C MODULE 30°

+1,5 MODULE

+CHL MODULE X-LARGE R+ARM 1

Art. Code CHL X-LARGE L:  
Art. Code CHL X-LARGE R:



width•depth•height  
365x134/184x92